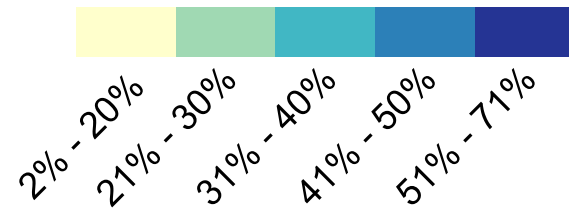


# Voting trends for current Democrats



Weighted % of Democrats who voted in the 2013 mayoral election, by election district

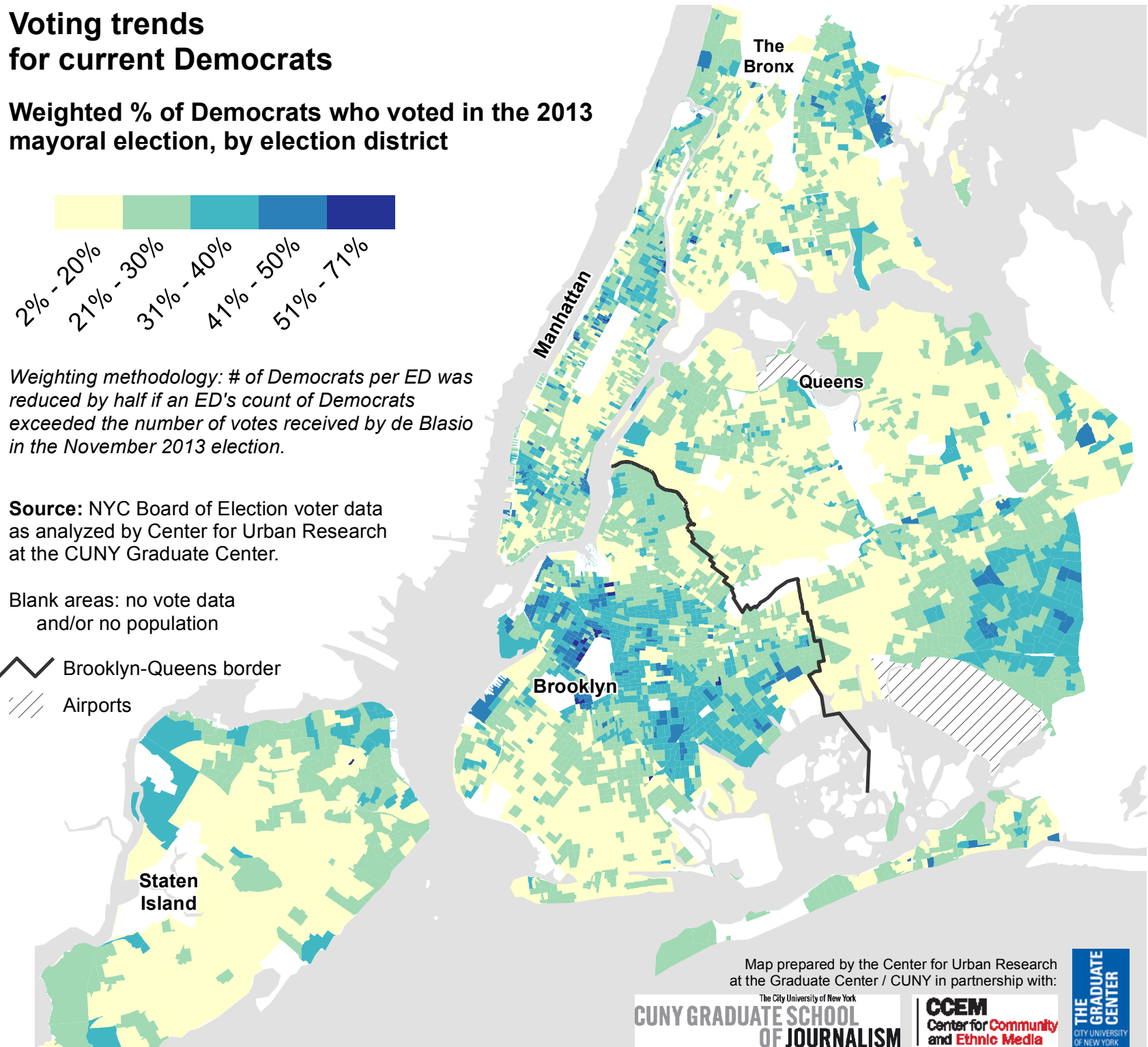


*Weighting methodology: # of Democrats per ED was reduced by half if an ED's count of Democrats exceeded the number of votes received by de Blasio in the November 2013 election.*

**Source:** NYC Board of Election voter data as analyzed by Center for Urban Research at the CUNY Graduate Center.

Blank areas: no vote data and/or no population

-  Brooklyn-Queens border
-  Airports



Map prepared by the Center for Urban Research at the Graduate Center / CUNY in partnership with:

The City University of New York  
**CUNY GRADUATE SCHOOL  
OF JOURNALISM**

**CCEM**  
Center for Community  
and Ethnic Media

**THE  
GRADUATE  
CENTER**  
CITY UNIVERSITY  
OF NEW YORK